

LASVIT ASSEMBLY AND MAINTENANCE MANUAL



**Decorative fixture
CL022SB-1CE**

Created: 5/6/2018

LASVIT s.r.o.

nám. Míru 55 / 473 01 Nový Bor / Czech Republic

T +420 481 120 810 / M +420 724 866 809 / F +420 481 120 622

www.lasvit.com

LASVIT Assembly and maintenance manual

CONTENTS

2/23

CONTENTS	2
GENERAL INFORMATION	3
PRODUCT DESCRIPTION	4
MAINTENANCE INSTRUCTION	5
CLEANING	6
EXCHANGE OF LIGHT SOURCE	7
ASSEMBLY MANUAL	8
PREPARING FOR INSTALLATION	9
ASSEMBLY	10
INSTALLATION OF GLASS COMPONENTS	17
THE ELECTRICAL CONNECTION	21
Installation of electrical equipment	21
Electrical connections	21
Installation of LED reflectors Soraa LED GU10	
230V,4000K; 7,5W; 25° or Soraa LED GU10	
230V,3000K; 7,5W; 25° -	21

Please read this manual carefully and keep it in case you need assistance while performing maintenance and cleaning procedures.

LASVIT Assembly and maintenance manual

GENERAL INFORMATION

3/23

TECHNICAL PARAMETERS /

Product number / CL022SB-1CE

Input voltage / 230 V, 50Hz

Rated power / 60 W

Weight / approx. 150 kg

Protection rating / IP 20

Safety class / CLASS I

Dimensions / Ø 1500 x H 2740 x OH 4570 mm

THE PRODUCT COMPLIES TO FOLLOWING INTERNATIONAL
OR EUROPEAN STANDARDS

THE FIXTURE WAS DESIGNED AND MANUFACTURED BY /

LASVIT s.r.o.

nám. Míru 55, Nový Bor 473 01 Czech Republic

T +420 325 516 330

F +420 325 516 331

lasvit@lasvit.com

www.lasvit.com



THE PRODUCT MUST NOT BE REMOVED TOGETHER WITH MIXED RESIDENTIAL
WASTE, IT MUST BE POSTPONED TO DESIGNATED PLACES OR IN PLACE OF RETURN

LASVIT Assembly and maintenance manual

PRODUCT DESCRIPTION

4/23

Decorative fixture in false ceiling made of hand blown glass components which are hanging on stainless steel wires.



LASVIT Assembly and maintenance manual

MAINTENANCE INSTRUCTION

5/23

PLEASE READ CAREFULLY FOLLOWING GENERAL RULES WHICH MUST BE RESPECTED DURING ALL MAINTENANCE PROCEDURES.

ATTENTION, BEFORE STARTING ANY MAINTENANCE PROCEDURE, ENSURE THAT THE POWER TO THE LIGHTING FIXTURE IS SWITCHED OFF AND SECURED AGAINST UNAUTHORIZED, NEGLIGENT OR ACCIDENTAL SWITCHING ON.

IN CASE OF FAILURE OTHER THAN LIGHT SOURCE, CONTACT PLEASE AUTHORIZED SERVICE OR MANUFACTURER. YOUR WARRANTY REPAIR WILL BE PROCEED ACCORDING TO GENERAL WARRANTY AND SALES CONDITIONS.

LASVIT Assembly and maintenance manual

CLEANING

6/23

ATTENTION, BEFORE STARTING ANY MAINTENANCE PROCEDURE, ENSURE THAT THE POWER TO THE LIGHTING FIXTURE IS SWITCHED OFF AND SECURED AGAINST UNAUTHORIZED, NEGLIGENT OR ACCIDENTAL SWITCHING ON.

DO NOT USE ANY SOLVENT BASED DETERGENTS CONTAINING ALCOHOL, METHYL ALCOHOL, DILUENTS, ACETONE, WHITE SPIRIT AND OTHER SUBSTANCES WHICH COULD DAMAGE THE SURFACE OF YOUR FIXTURE.

WE STRICTLY RECOMMEND TO USE SUITABLE CHANDELIER CLEANER SUCH AS SPARKLE PLENTY OR SIMILAR OR TO USE ONLY DRY METHOD USING THE DUSTER. DO NOT USE ABRASIVE SUBSTANCES OR ROUGH CLEANING SPONGE WHICH CAN SCRATCH THE SURFACE OF YOUR FIXTURE.

USING A VACUUM CLEANER IS NOT RECOMMENDED, THE HARD NOZZLE CAN SCRATCH THE SURFACE OF YOUR FIXTURE. USE A SUITABLE WORKING PLATFORM TO PREVENT ANY INJURY.

RECOMMENDED CLEANING EQUIPMENT

Soft rag, lint free, for cleaning the surface.

Soft solution of warm water and nonaggressive soap another soft rag, lint free, for drying the surface.

When cleaning the fixture start from the top continuing to the bottom.

Change the cleaning solution every time there is visible contamination.

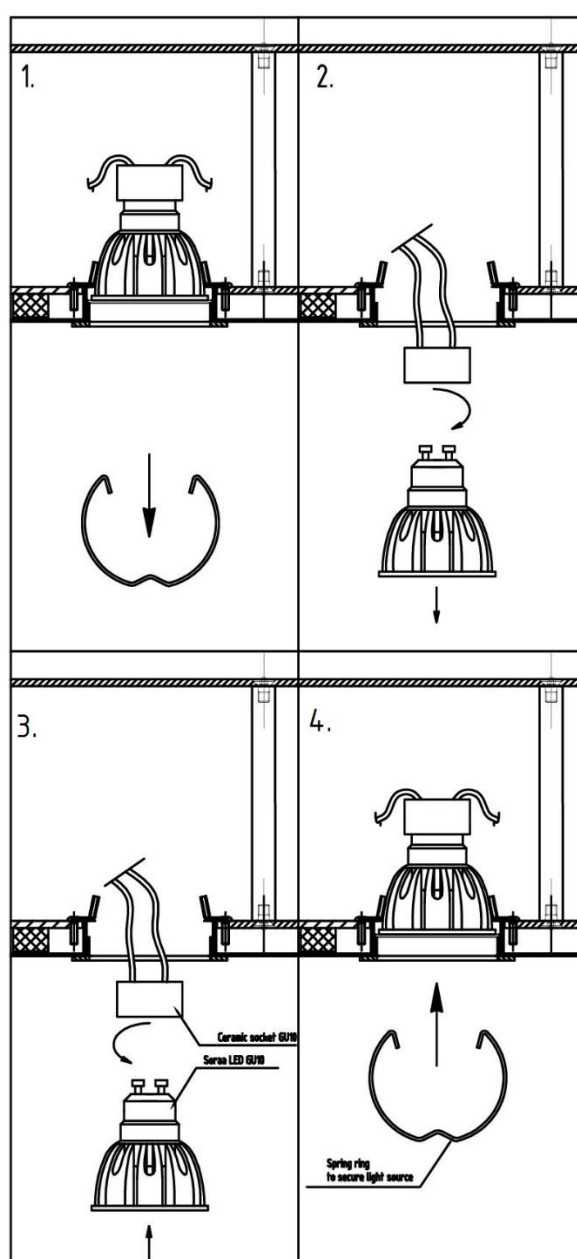
After completing the cleaning wait to complete drying before you connect the power supply.

LASVIT Assembly and maintenance manual

EXCHANGE OF LIGHT SOURCE

7/23

Light source type: Soraa LED GU10,230V,4000K; 7,5W; 25°– chandelier nr CLo22SB-1CE
Soraa LED GU10,230V,3000K; 7,5W; 25°– chandelier nr CLo22SB-1CE (Pic.1)



Pic.1

Replacement of the light source should be provided by qualified technician to prevent any damage to health or property.

LASVIT Assembly and maintenance manual

ASSEMBLY MANUAL

8/23

Installation of the chandelier should be performed by experienced and appropriately qualified personnel!

Assembling and connection to main power supply should be provided by authorized electrician only!
At least two people certified to perform work at height are needed for the assembly!

Before starting installation, ensure that the power to the lighting fixture is switched OFF and secured against unauthorized, negligent or accidental switching on.

LASVIT Assembly and maintenance manual

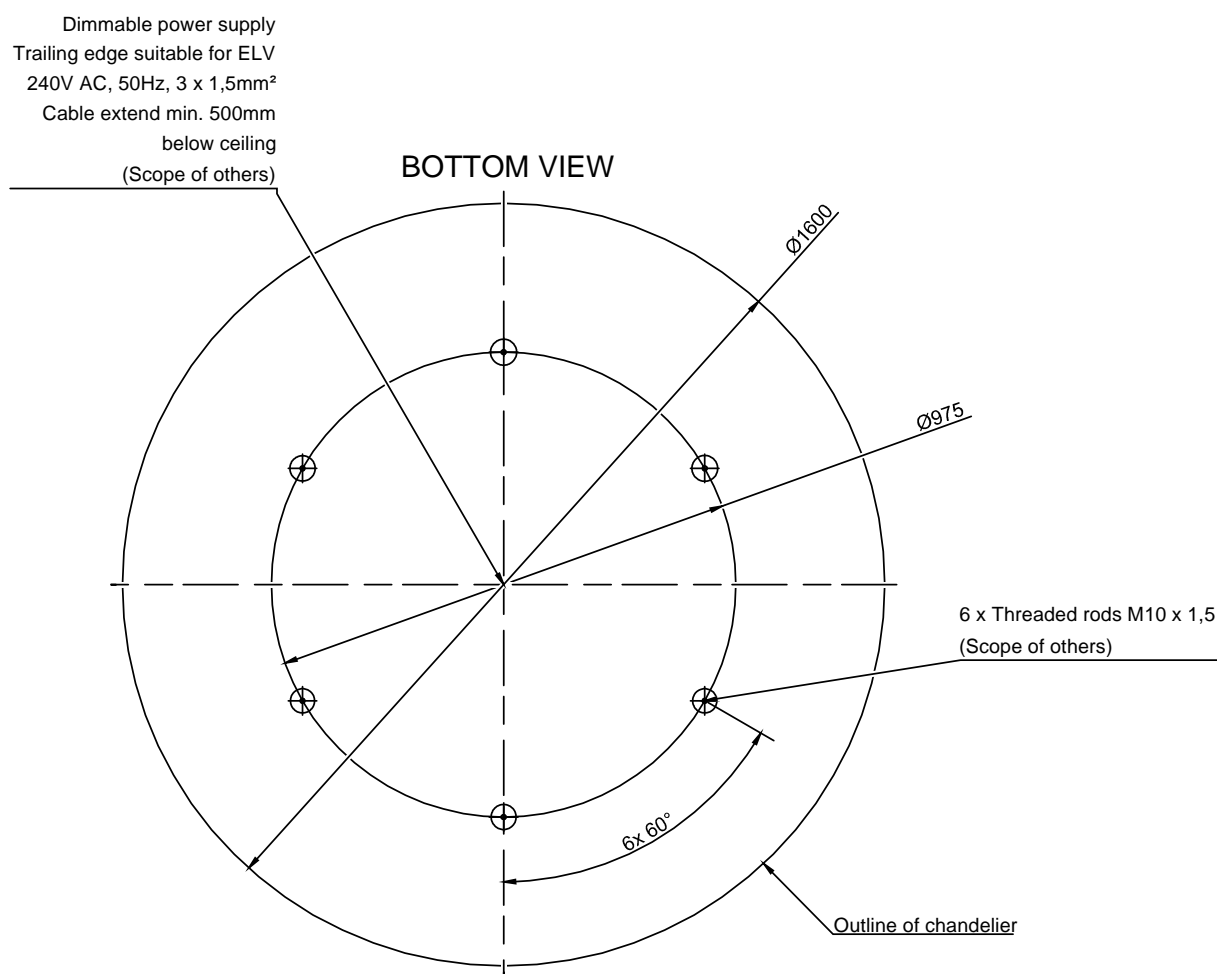
PREPARING FOR INSTALLATION

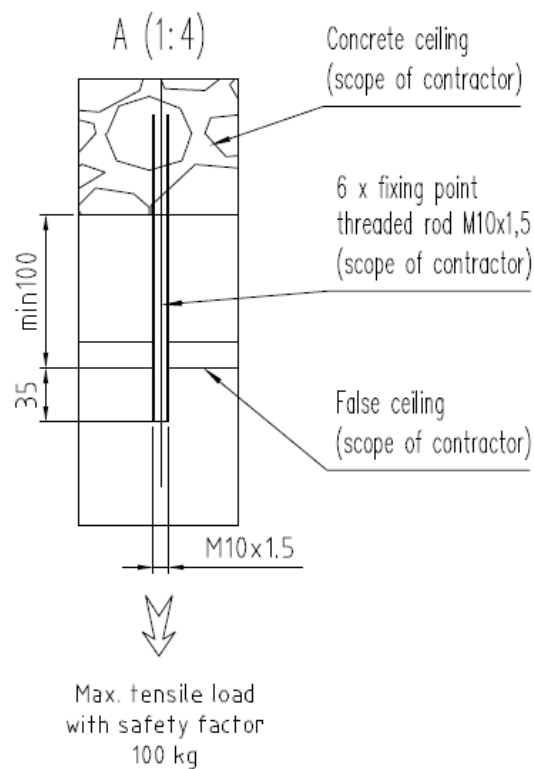
9/23

Required tools:

- 1) Socket wrench with extension
- 2) Special key for cable gripper M6×1
- 3) Pliers, needle-nose pliers
- 4) Cutting pliers
- 5) Crimper
- 6) Short Circuit Detector
- 7) White cotton gloves, 2 pairs
- 8) Measuring tools

Start installation from controlling of fixing points and power supply according to following diagram. Every fixing point must bear at least 100 kg of tensile strength. (Pic.2,3)





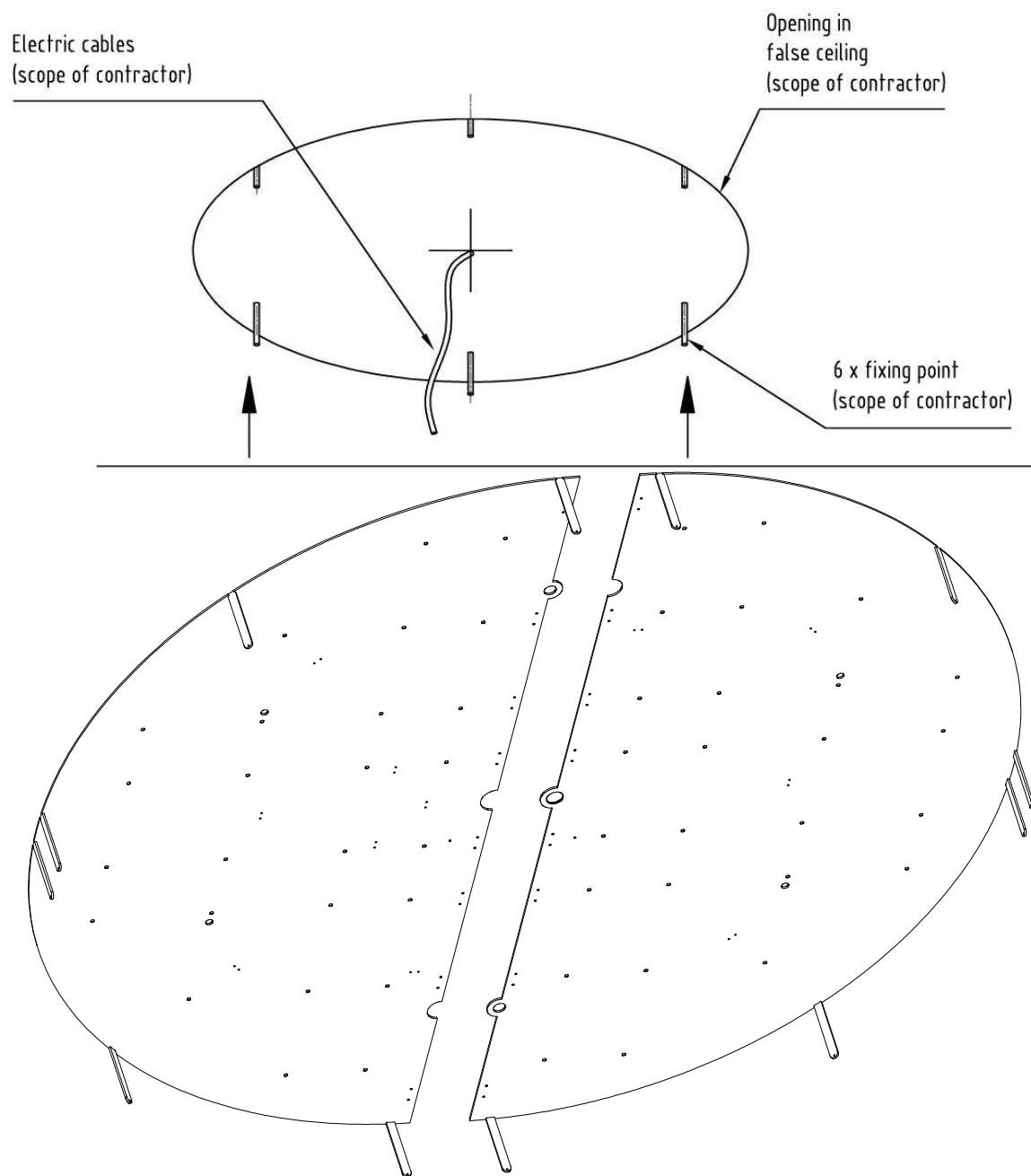
Pic.3

LASVIT Assembly and maintenance manual

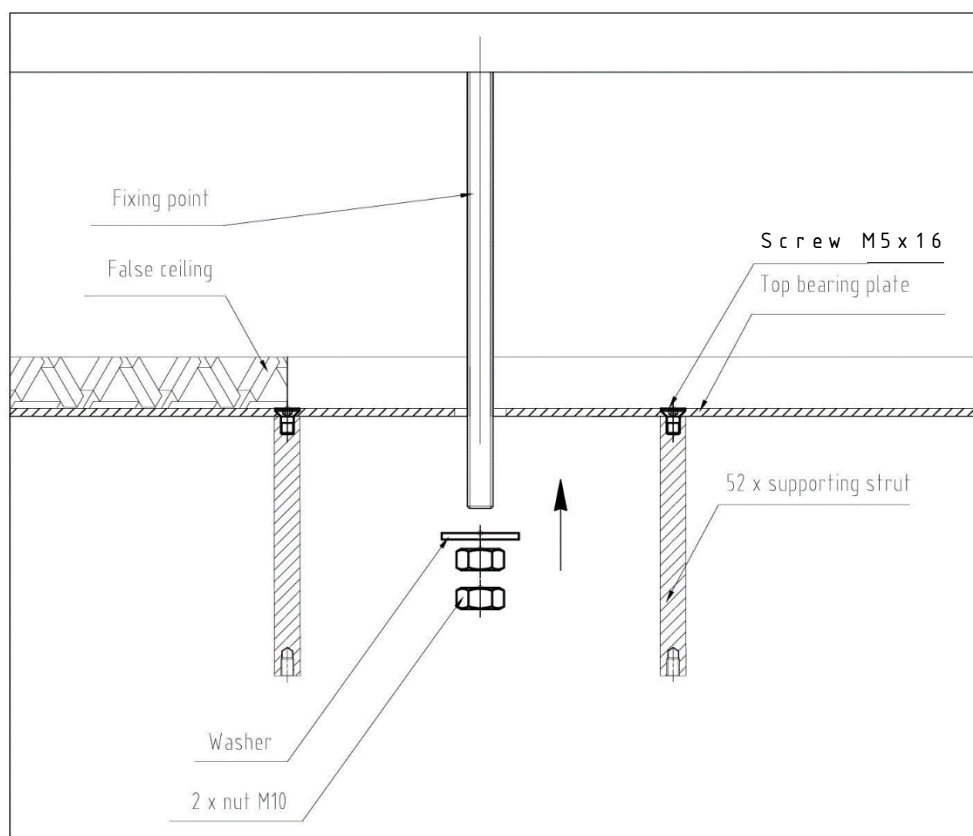
ASSEMBLY

Please follow the steps below:

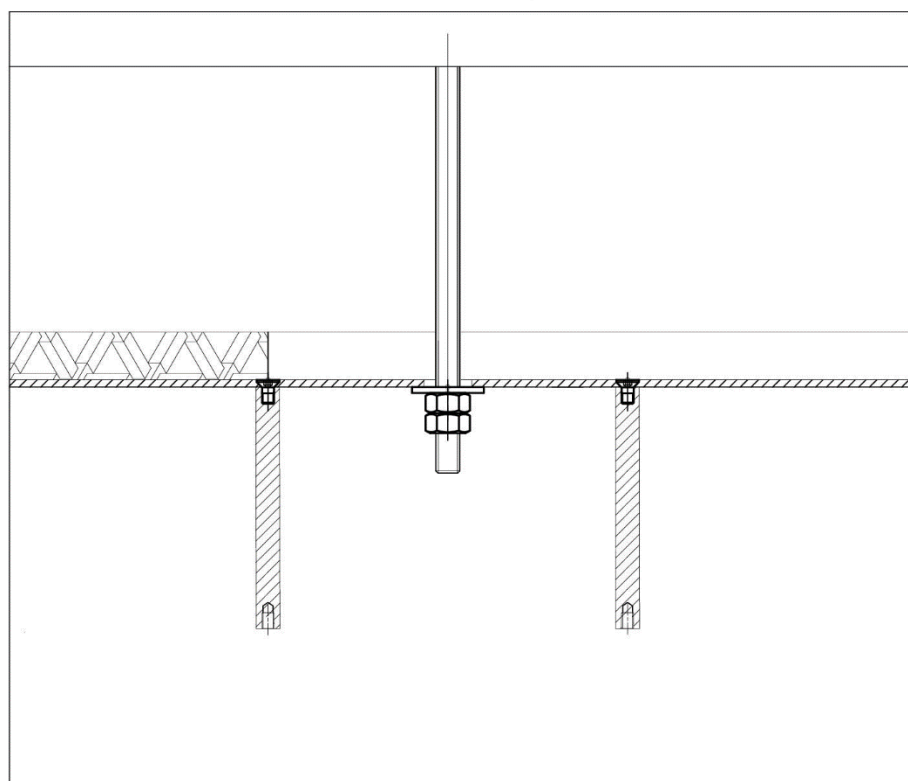
1. Unpack all components. Be aware not to damage the glass and decorative elements.
2. Install metal frame onto 6 x fixing points M10x1,5 and provide electrical cable trough the openings in construction (see sketch below). (Pic 4,5,6)



Pic 4

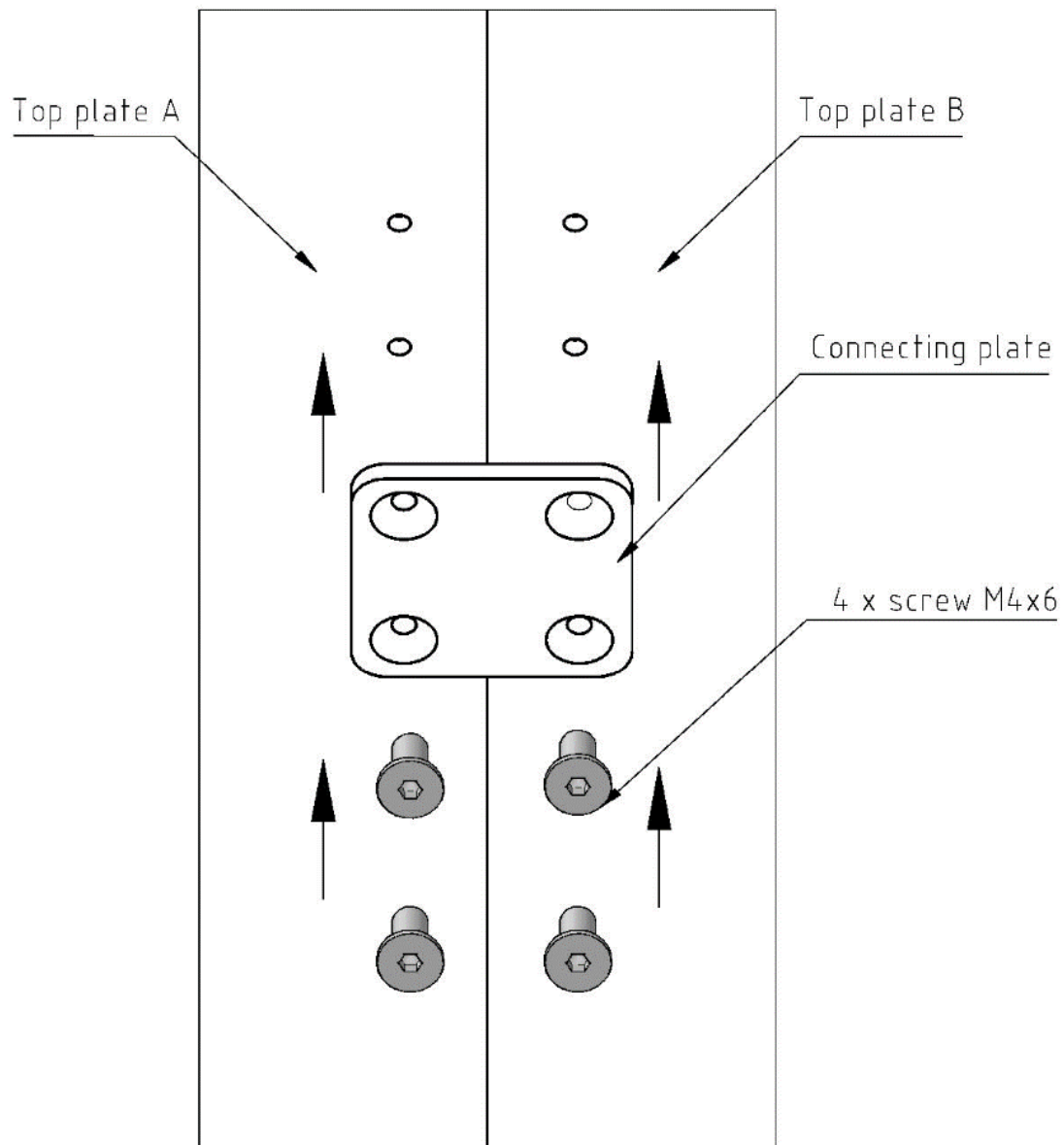


Pic 5



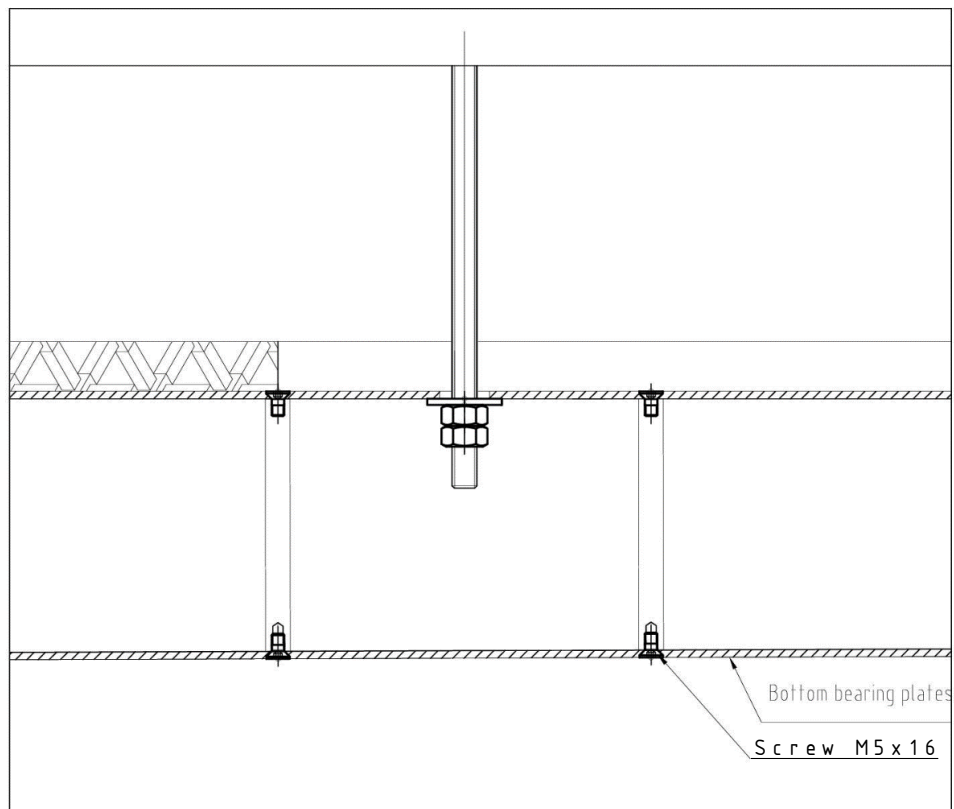
Pic 6

3. Joint top plates using 6 x connecting plates and 32x countersunk screws M4x6 (Pic 7)

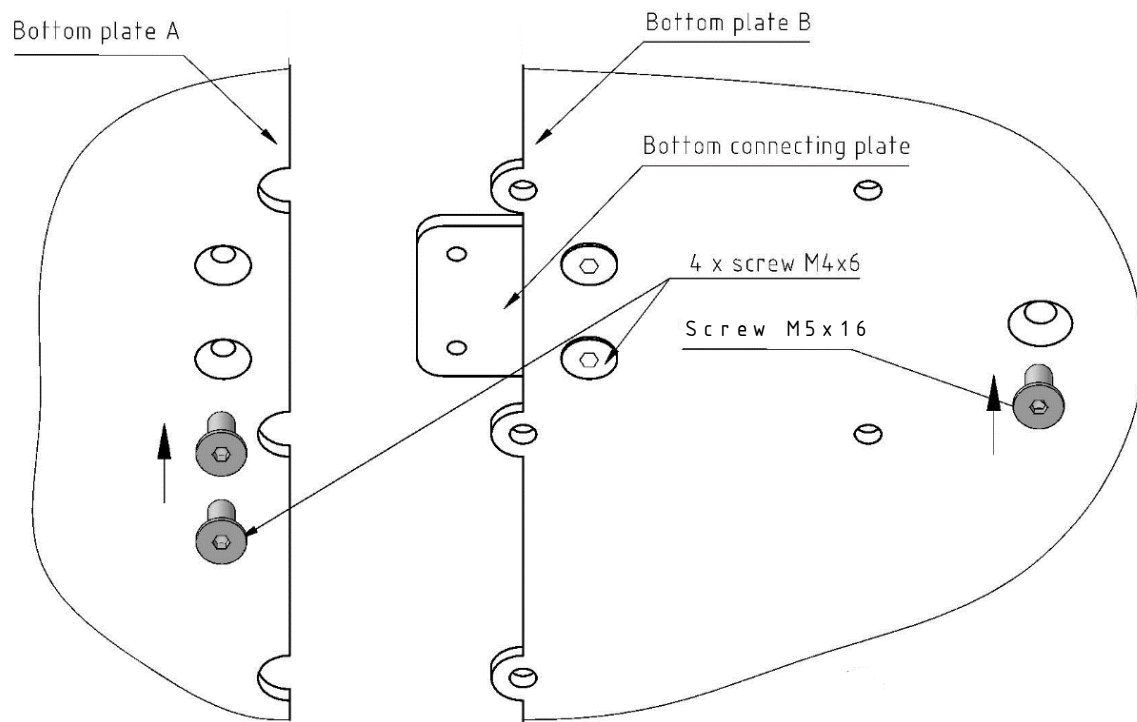


Pic 7

4. Mount bottom bearing plates using 52 x countersunk screws M5x16 in place where appropriate. Next connect bottom plates using 6 x connecting plates and 24 x countersunk screw M4x6 (Pic.8,9)

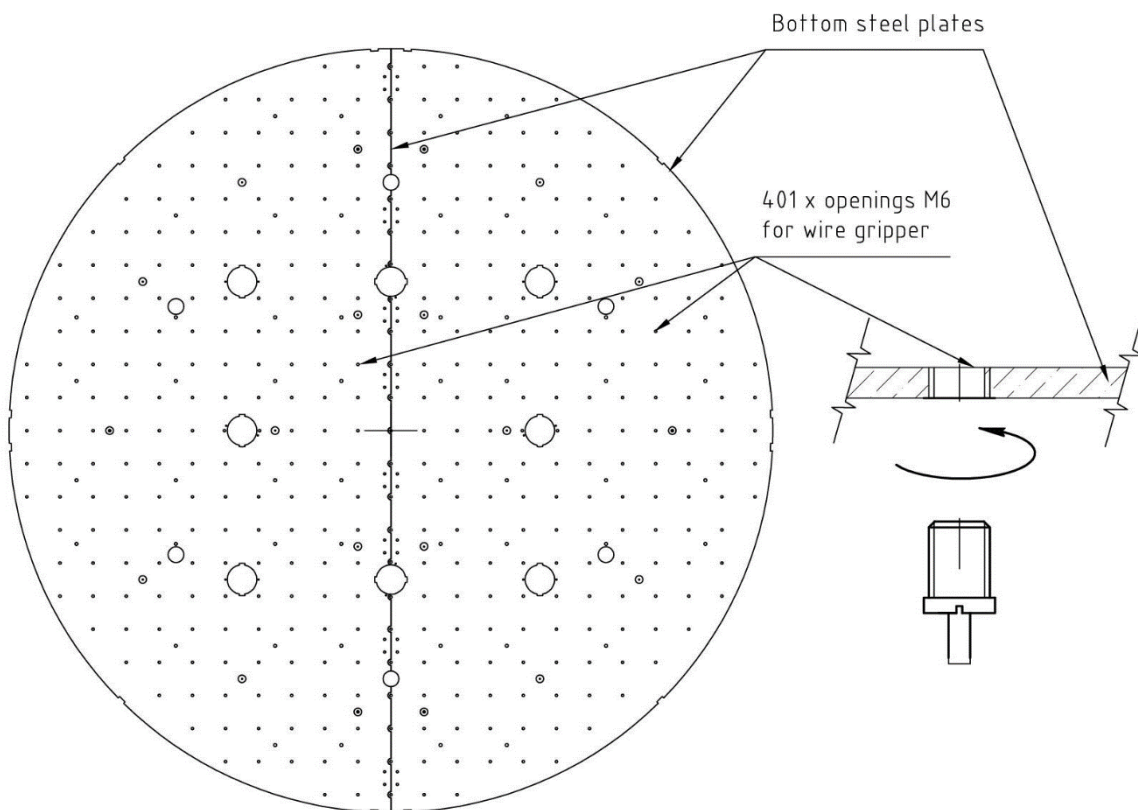


Pic 8



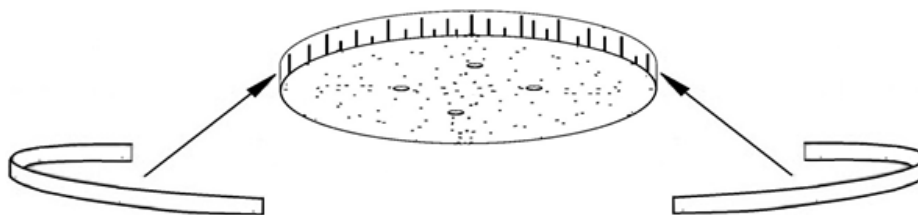
Pic 9

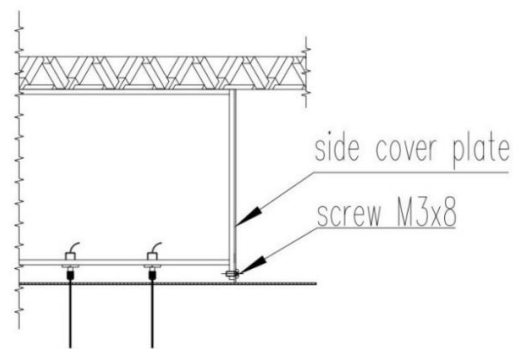
5. Install 401 x wire grippers M6x1 in bottom bearing steel plate. (Pic 10)



Pic 10

6. Provide electrical connection according wiring diagram (see "The electrical connection" clause). Connect cables and hide it inside metal frame construction
7. Install 4 x side polished stainless steel cover plate to the bearing frame screws M3x8 as shown on sketch below, foil covered side should be facing outside, foil should be removed after installation of frame. (Pic 11)



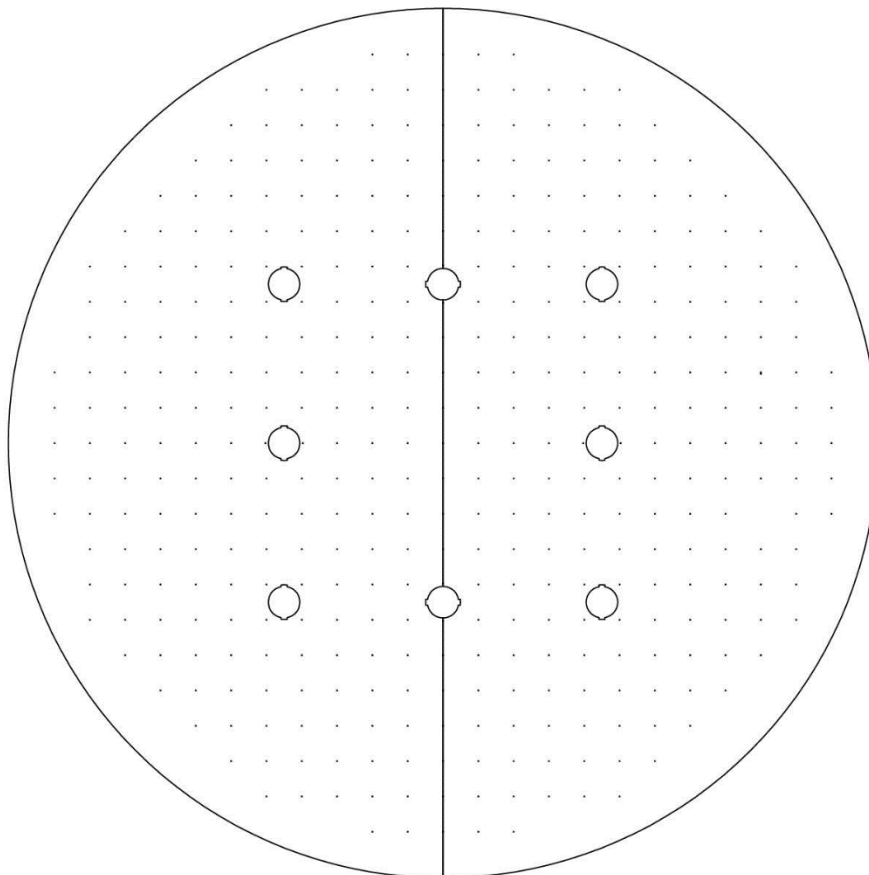


Pic 11

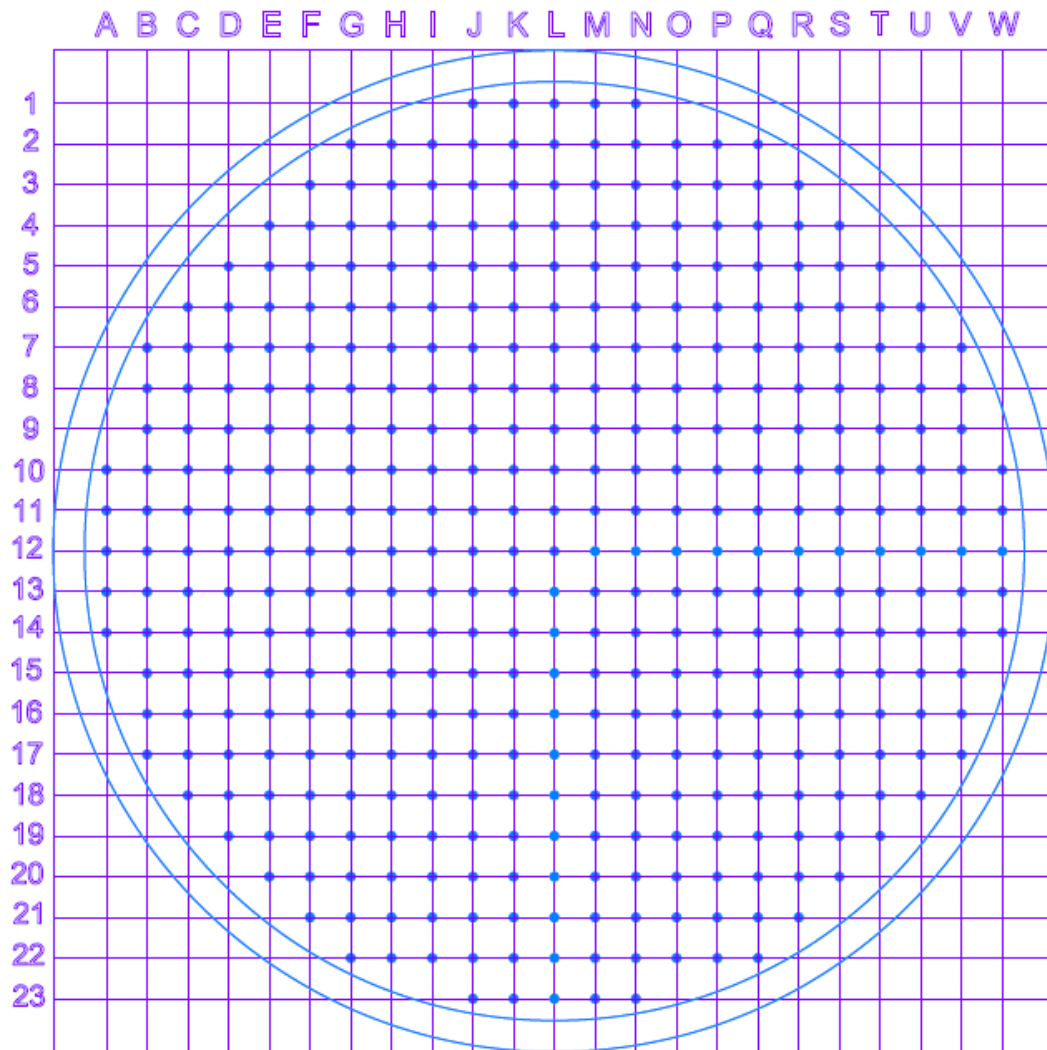
INSTALLATION OF GLASS COMPONENTS

8. Pass wires with glass through bottom cover plate(foil covered side should be facing downward, foil should be removed after securing cover plates with special holders), according the scheme on next page. White cotton gloves should be used for glass components mounting.(Pic 12,13)

Bottom cover stainless steel plates

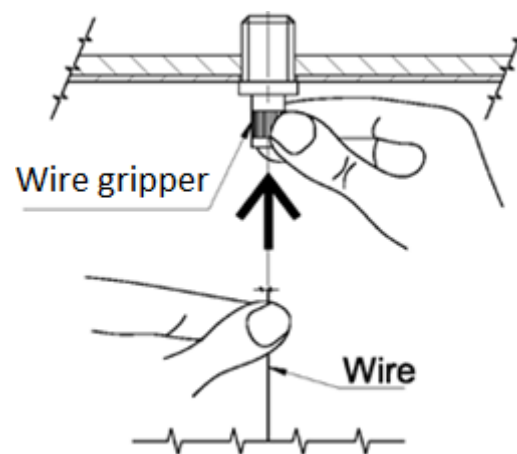


Pic 12



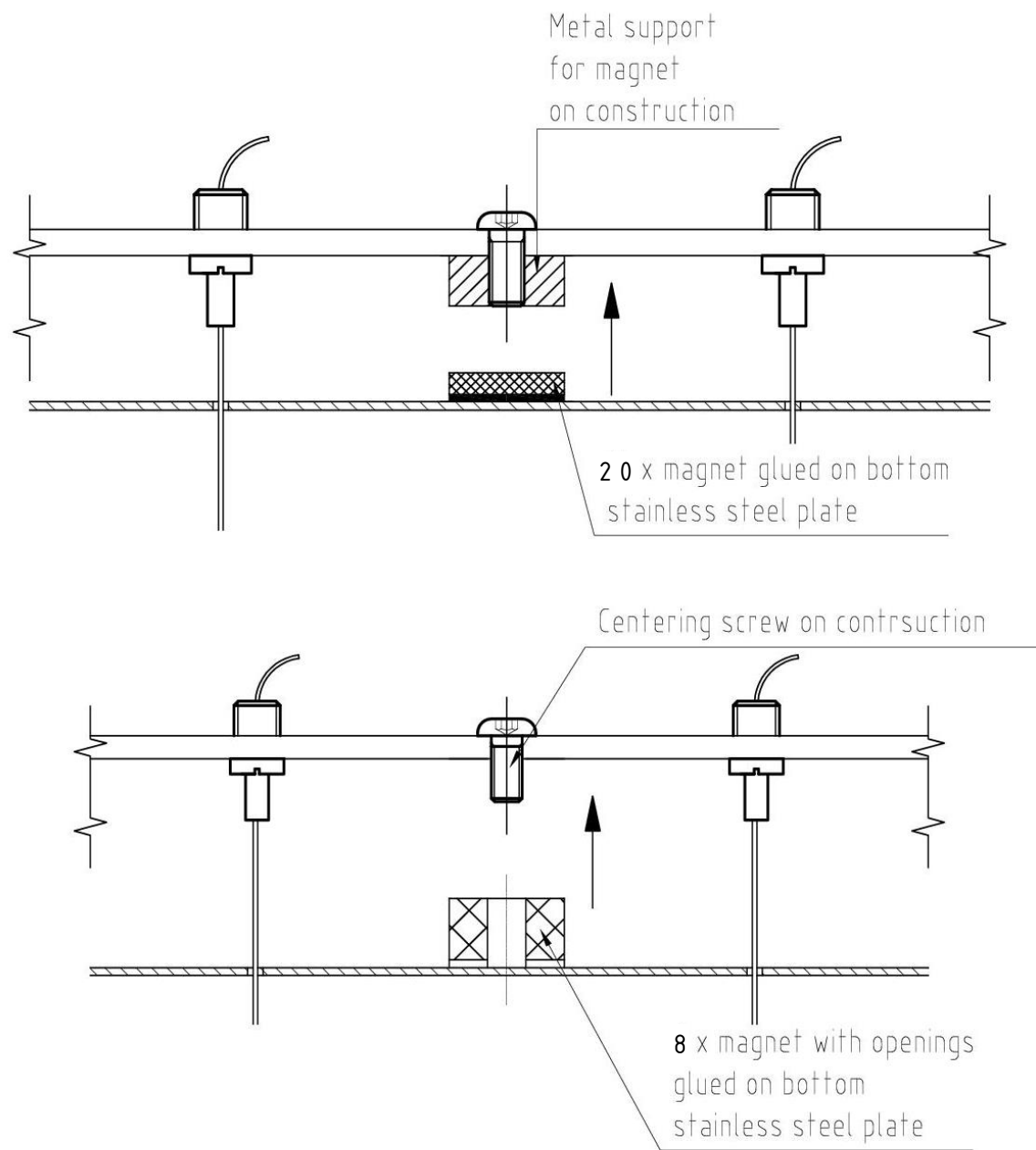
Pic 13

9. Next support bottom cover stainless steel plate and fix wires (min 50mm from the end) in wire grippers. (Pic 14)



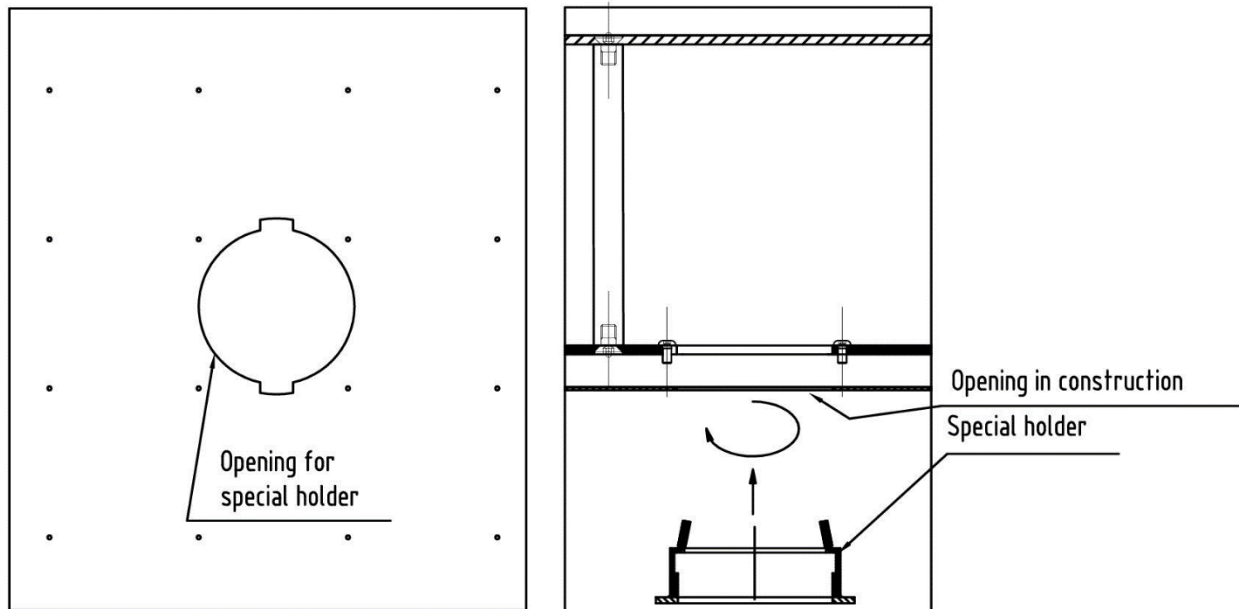
Pic14

10. Carefully uplift bottom stainless steel cover plate with glued magnet. Magnets on plate must hit on appropriate places on steel construction (Pic 15)



Pic 15

11. Install 8 x special holders to secure bottom cover stainless steel plate. Put into openings and rotate till stop. One may tie wires with glass on few bundles with a piece of string to prevent them tangling during lamp installation.(Pic16)



Pic 16

12. Next install Sora LED GU10 light sources. (see "The electrical connection clause")

LASVIT Assembly and maintenance manual

THE ELECTRICAL CONNECTION

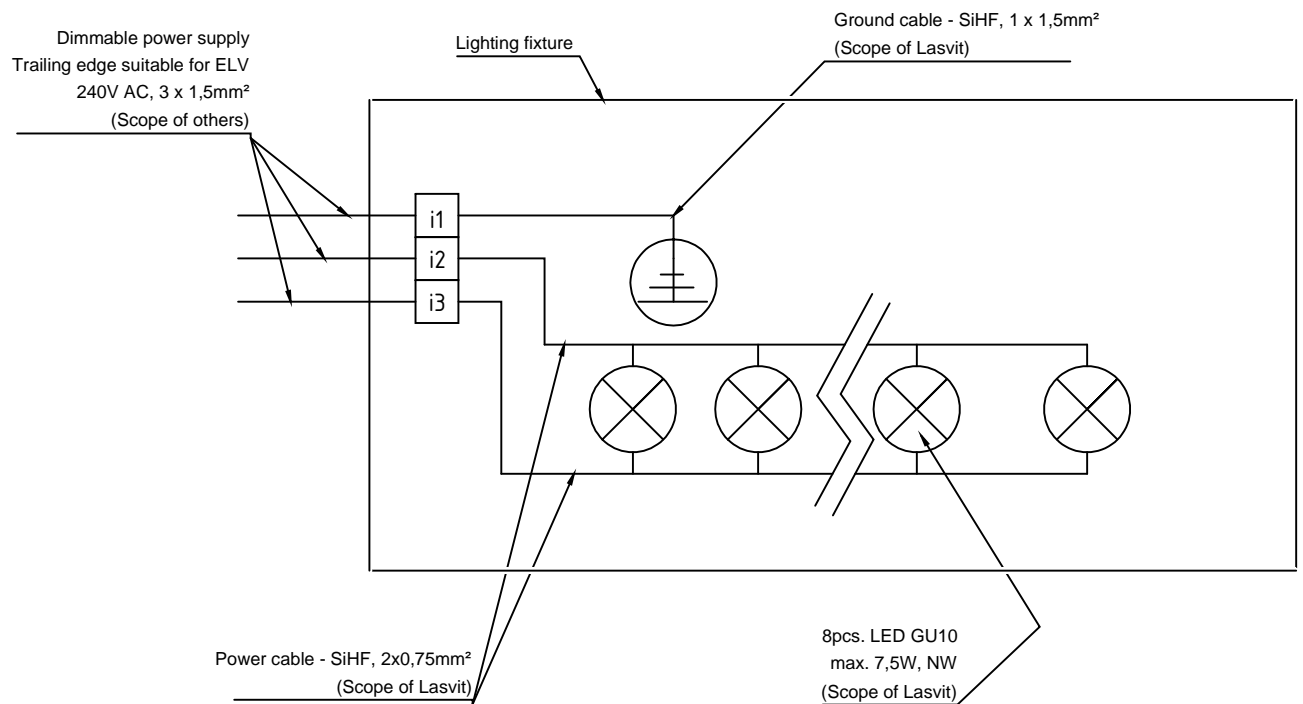
21/23

Installation of electrical equipment

All the LED drivers placed into the frame.

Electrical connections

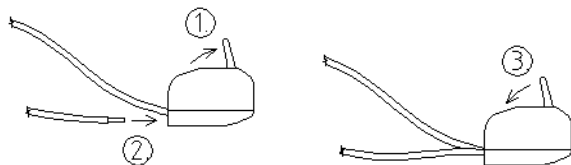
All the electrical connections should be performed according to the wiring diagram (Pic 17)



Pic 17

All electrical connection should be performed using easy-locking WAGO terminal blocks (included in chandelier package). Terminal block function:

1. Move the lever up (1)
2. Insert the wire into the terminal block (2)

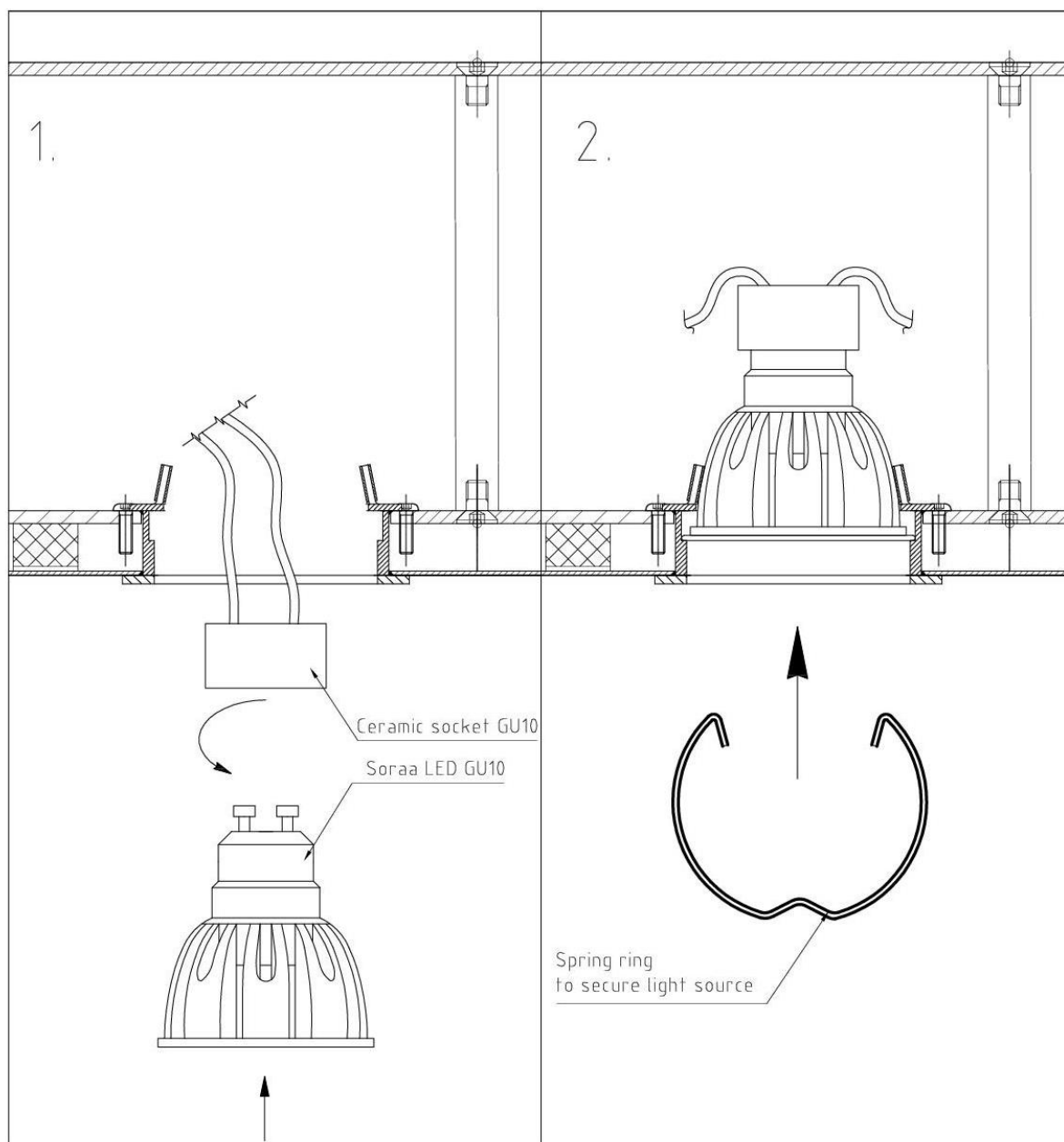


3. Move the lever down (3)

Make sure no wires were damaged during the assembly.

Protective conductor PE (green – yellow insulation) from power supply should be placed in to the terminal PE of chandelier

**Installation of LED reflectors Soraa LED GU10 230V,4000K; 7,5W; 25°
or Soraa LED GU10,230V,3000K; 7,5W; 25°**



Measurement of the insulation resistance and measure the effectiveness of insulation and protection against accidental contact should be performed after final installation.

Turn on the power supply and make sure that LED modules are working.

After finish installation chandelier should look like this:

